

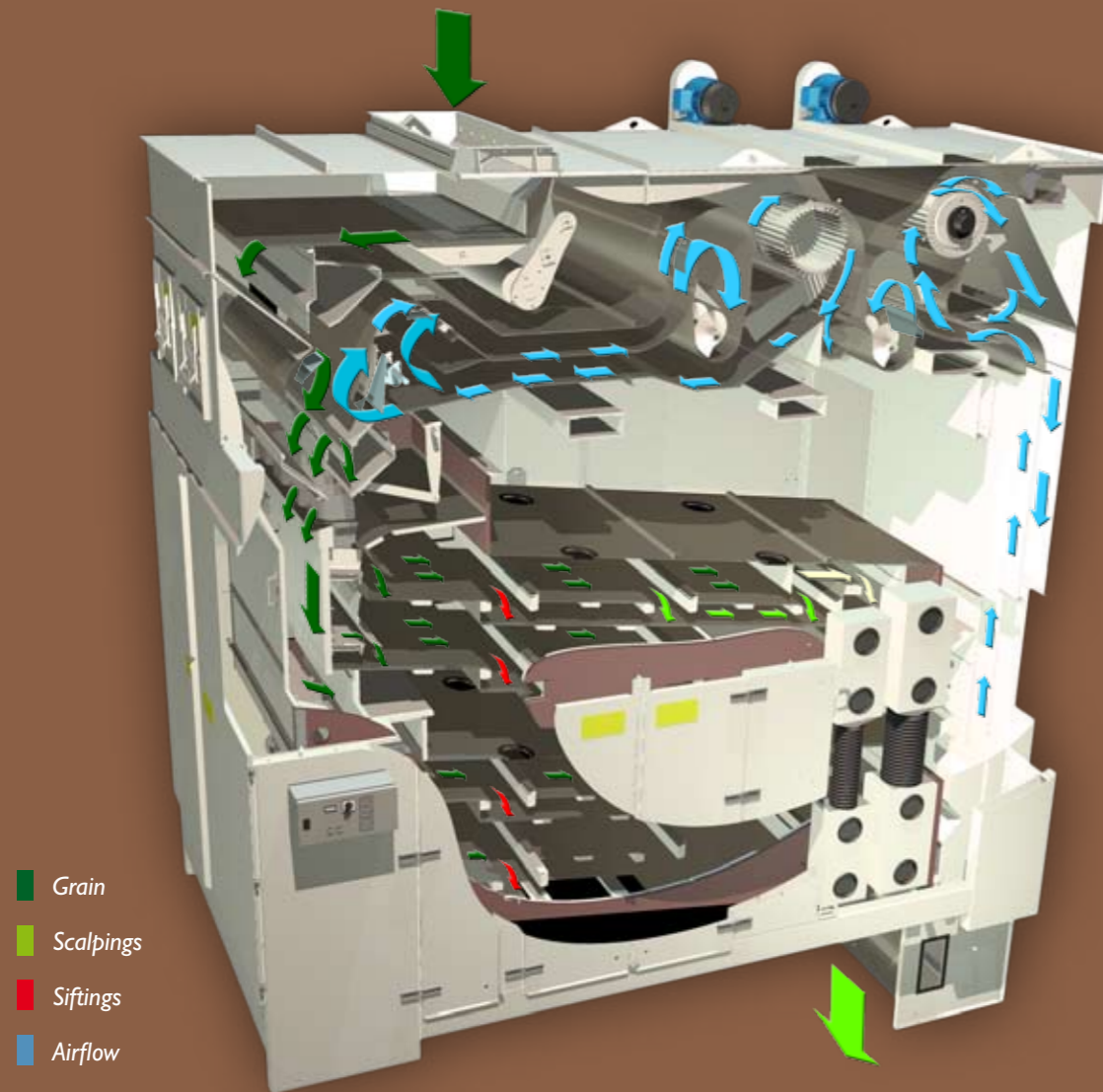
Pre cleaning capacity: (max. 20% moisture content)

Wheat, Barley, Maize, Rape seed	120 t/h / 4.400 b/h Wheat
Paddy rice	50 t/h
Sunflower (14% moisture content)	50 t/h

Industrial cleaning capacity may vary on specific demands and conditions (max. 15 % moisture content)

Wheat, Maize, Barley, Soya	100 t/h / 3.650 b/h Wheat
Rape seed, 98% purity	50 t/h
Paddy rice	25-50 t/h
Peas	80 t/h
Malting barley	25 t/h

DELTA COMBI CLEANER I57

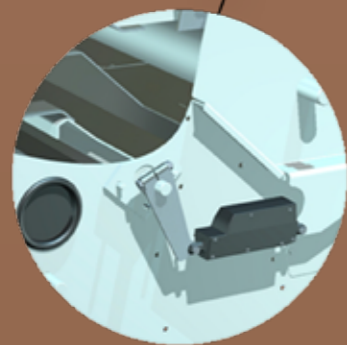
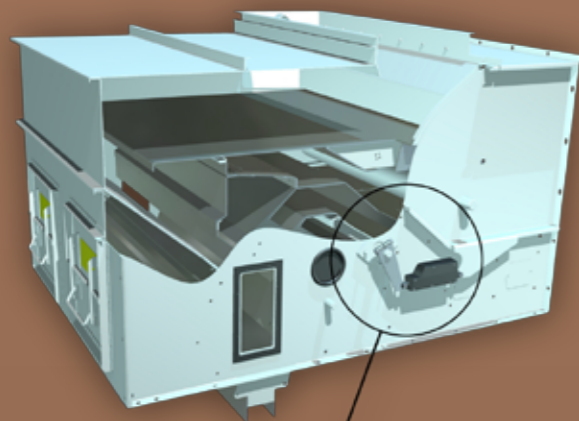


Cimbria Manufacturing A/S » Faartoftvej 22, 7700 Thisted, Denmark
Phone » (+45) 96 17 90 00 · Fax » (+45) 96 17 90 99
manufacturing@cimbria.com · www.cimbria.com

wadmann.dk



FEEDING UNIT



PLC adjusted actuators for stepless adjustment of air



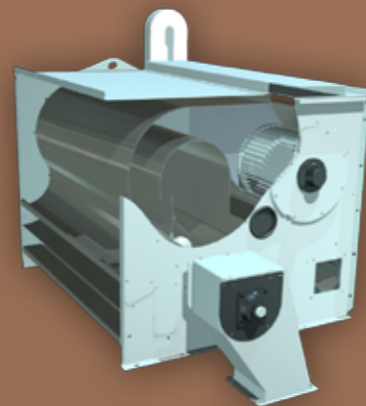
Control panel air and feed adjustment.
Can also be connected to plant PLC system

Delta Combi Cleaner 157 has been developed for the high capacity pre-cleaning of grain, peas and rape seed, industrial cleaning of grain for milling and malting barley.

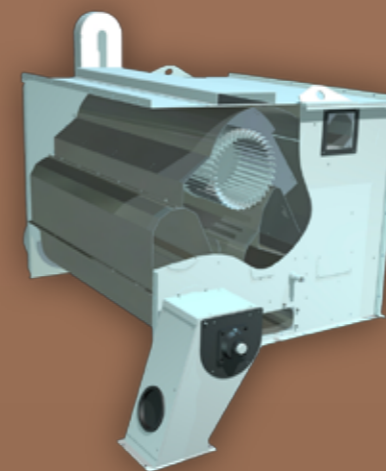
The machine's screen area with its accurately matched stroke and frequency is complemented by Cimbría's highly efficient recirculation pre- and after suction system.

Precision balanced machine with extremely low dynamic loads for building floor structures

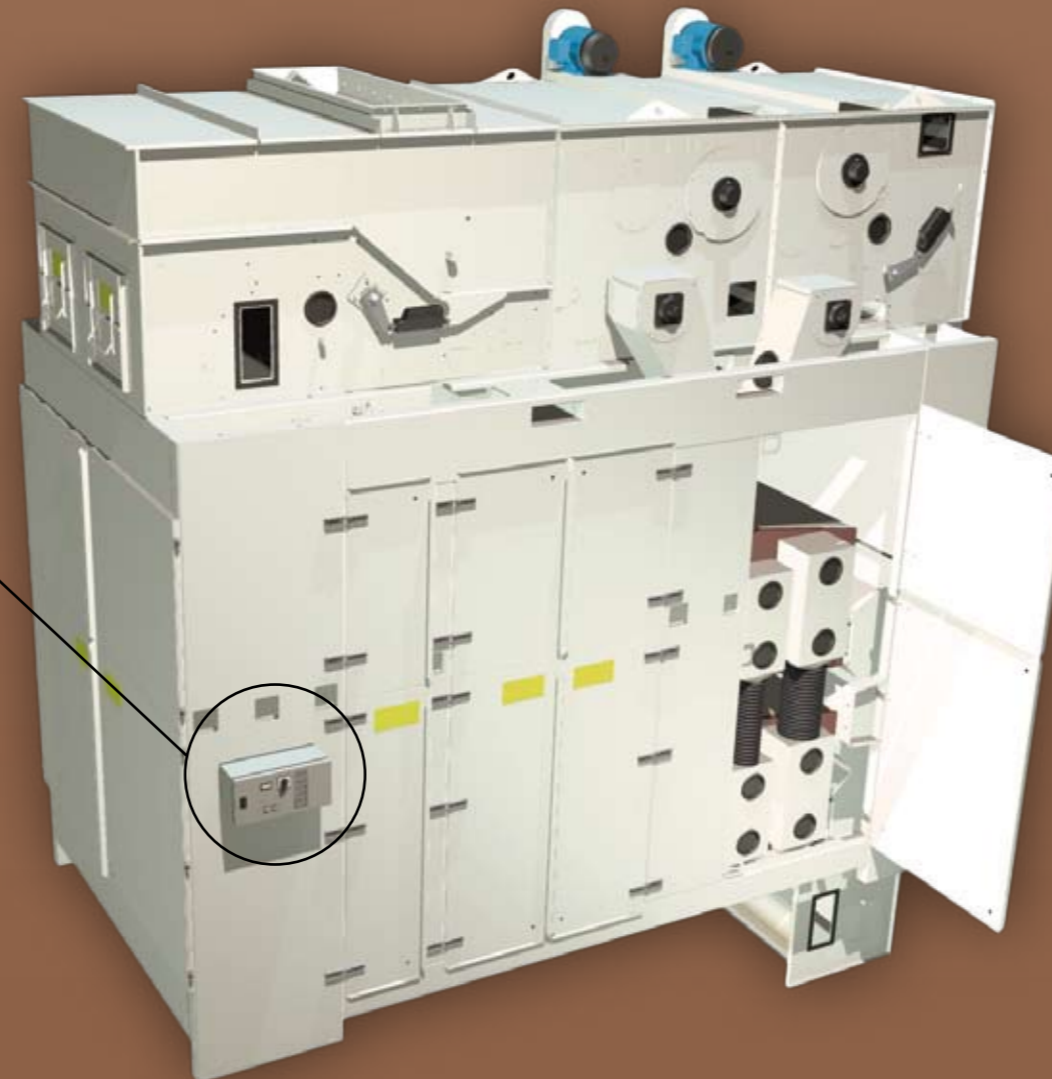
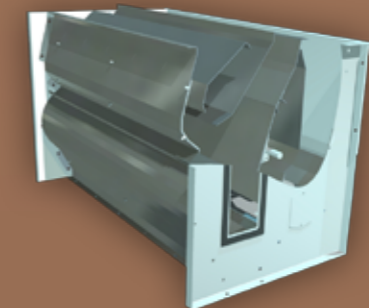
PRE SUCTION AIR UNIT



AFTER SUCTION AIR UNIT



OUTLET UNIT



Dimensions

Height	4.075 mm (161 in)
Width	2.645 mm (104 in)
Length	4.175 mm (164,5 in)
Total weight	5.000 kg (11.023 lbs)
Freight volume	40 m ³ (1412 ft ³)
Dynamic load	Ph = +/- 470 N Pv = +/- 1830 N 10 N = 1 kg

Air volume

Internal air volume	
(pre- and after suction)	16.000 m ³ /h (9.500 ft ³ /min)
External suction (60mm)	3.800 m ³ /h (2.250 ft ³ /min)

Feeding unit

Optimal feeding in the full width of the machine is achieved by a shaker feeder with step-less speed adjustment.

Pre suction air unit

A precise adjustable airflow from the systems full width impellor removes dust and fines from the incoming product and discharges it in the screw conveyor outlet and mini cyclone. 800 m³/h of air has to go to the central aspiration system.

After suction air unit

A precise adjustable airflow from the systems full width impellor removes light particles from the product flow before it leaves the machine.

The lights are lifted to the screw conveyor outlet and mini cyclone. 800 m³/h of air has to go to the central aspiration system.

Outlet unit

Finished product.
Elongated post air column for maximum exposure to air system